

MILLEN • 

HACKMAN'S LANE, COCKS CLARK

This development of 5 detached homes is located within the village of Cocks Clark in Essex. The planning process on this site has been difficult, however we are confident of overcoming the planning matters and delivering these family homes to local people in the future.

The development will include provisions for vegetable gardens, home offices and energy efficient buildings helping future occupants have a very low carbon footprint.

The properties will have views across beautiful Essex countryside and are only 50m from the village pub.

CONTACT US



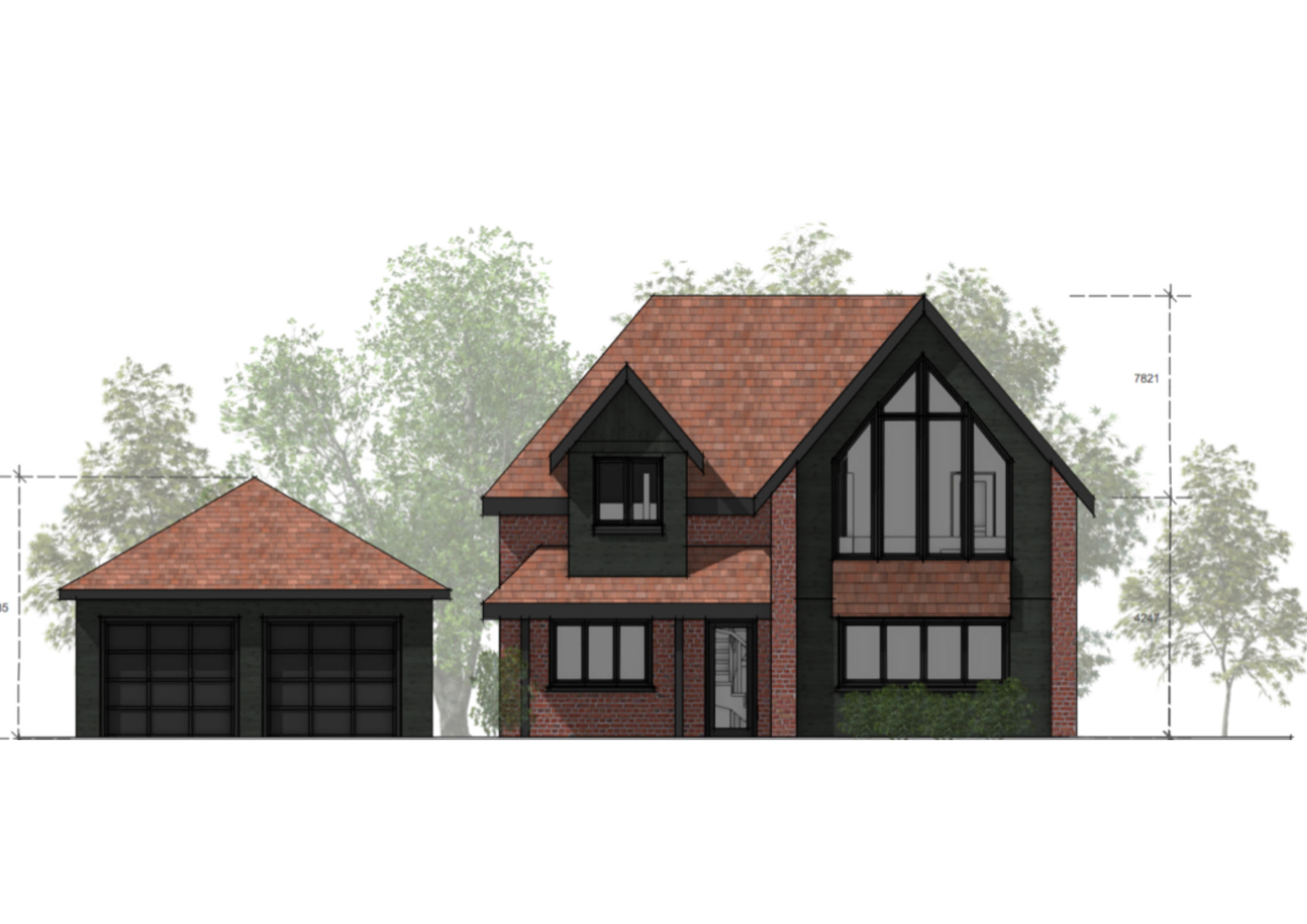
Millen Homes LTD
Croxley Green, Hertfordshire
United Kingdom
+44 1923 943 555
hello@wearemillen.com
www.millenhomes.co.uk

WE ARE MILLEN

MILLEN • 

True Sustainable Development.







Mature trees retained

New semi mature tree planting to boundary

Plot 1

Single Storey extension with Sedum and Wildflower roof

Plot 2

New semi mature tree planting to boundary

Mature trees retained

All Parking Bays and Garages comply with councils own size standards

Plot 3

Plot 4

Plot 5

New Pedestrian Crossing Footpath

Hackmans Lane

Existing Footpath Terminates

Burial Ground

Additional line of sight near on Pride

R CLUB: Parking with EV charging point.

Positioned 7.2m from the boundary with Caxton Pride to concerns raised by the actor.

Mature trees retained

MAP

