

MILLEN • 

FISH STREET, GOLDHANGER

This development of 3 family homes is within the Goldhanger Conservation Area. The use of modern buildings in these locations require careful consideration of the local architecture, materials and street scene. The development looks to retain all feature trees and the listed brick wall while delivering 3 new homes in a Local Authority with a substantial housing need. Delivery of these homes is due in 2024 so register your interest with our team if you would like to reserve one.

CONTACT US

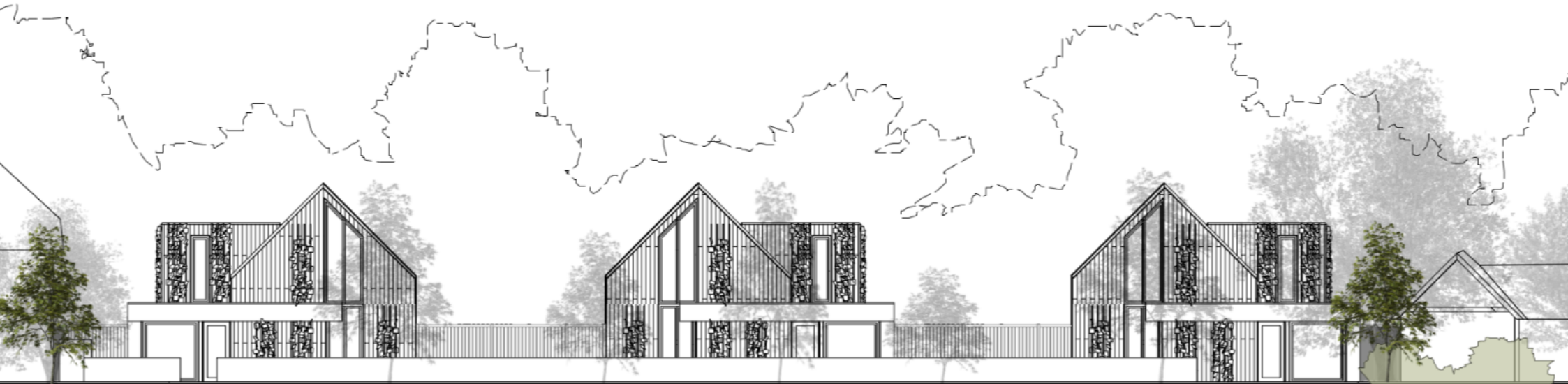


Millen Homes LTD
Croxley Green, Hertfordshire
United Kingdom
+44 1923 943 555
hello@wearemillen.com
www.millenhomes.co.uk

WE ARE MILLEN

MILLEN • 

True Sustainable Development.







Existing hedgerow trimmed back to 3m from boundary

New landscaping

Tree retained

Tree retained

Existing hedgerow trimmed back to 1m from boundary

new understorey landscaping

new understorey landscaping

Low grade multi stem tree removed to facilitate the development

Living Roofs

Living Roofs

Living Roofs

Existing hedgerow from boundary

EV charging points

EV charging points

low grade tree removed to facilitate development

EV charging points

new understorey landscaping

Tree "of heaven" retained as a feature

small shrubs removed to facilitate the development

Proposed landscaping buffer to frame listed wall, screen the development and offer an attractive aspect when view

MAP

