

MILLEN • 

RUSHGROVE, FLEET (CONCEPT)

While planning has been granted for a traditional detached dwelling, Millen's team are keen to pursue a more sustainable and modern dwelling here.

Plans are currently being prepared for a modern timber clad house which will sit amongst the large pines with sympathetically chosen materials.

Located with the Fleet Conservation area this site took almost 6 years to gain planning and demonstrates the determination of the planning team to overcome numerous obstacles. Keep an eye on this one over the next 12 months!

CONTACT US



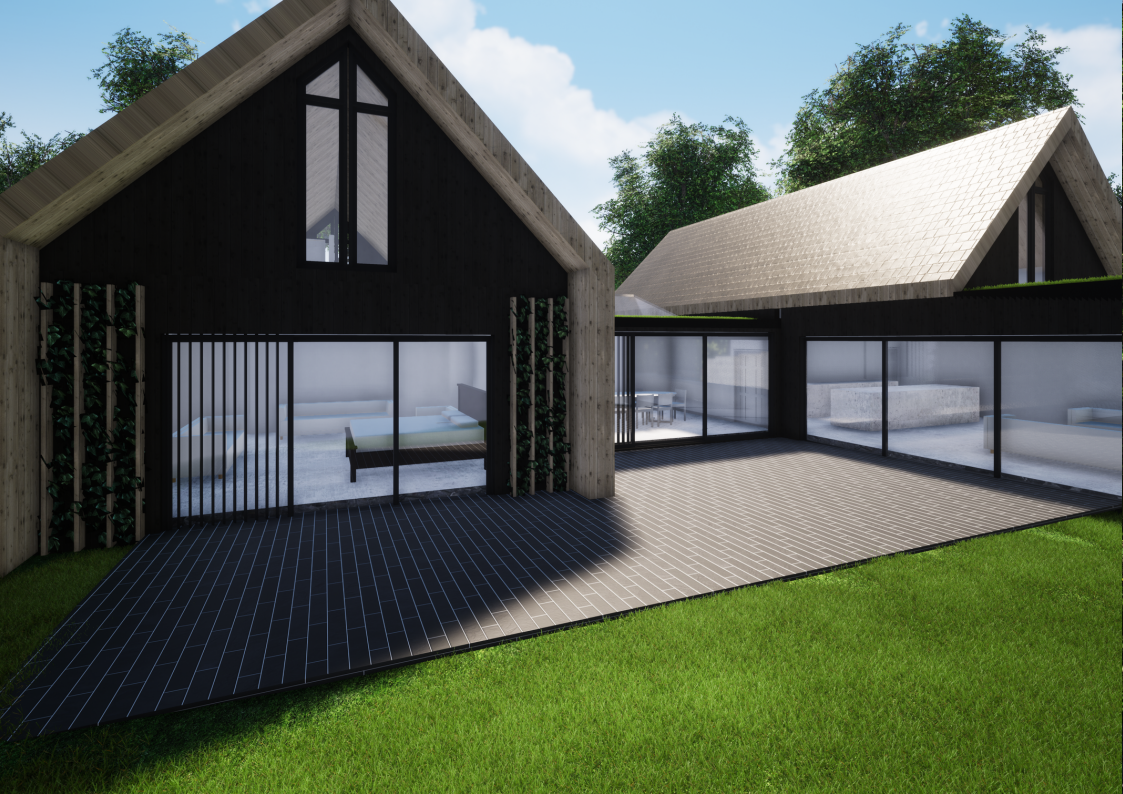
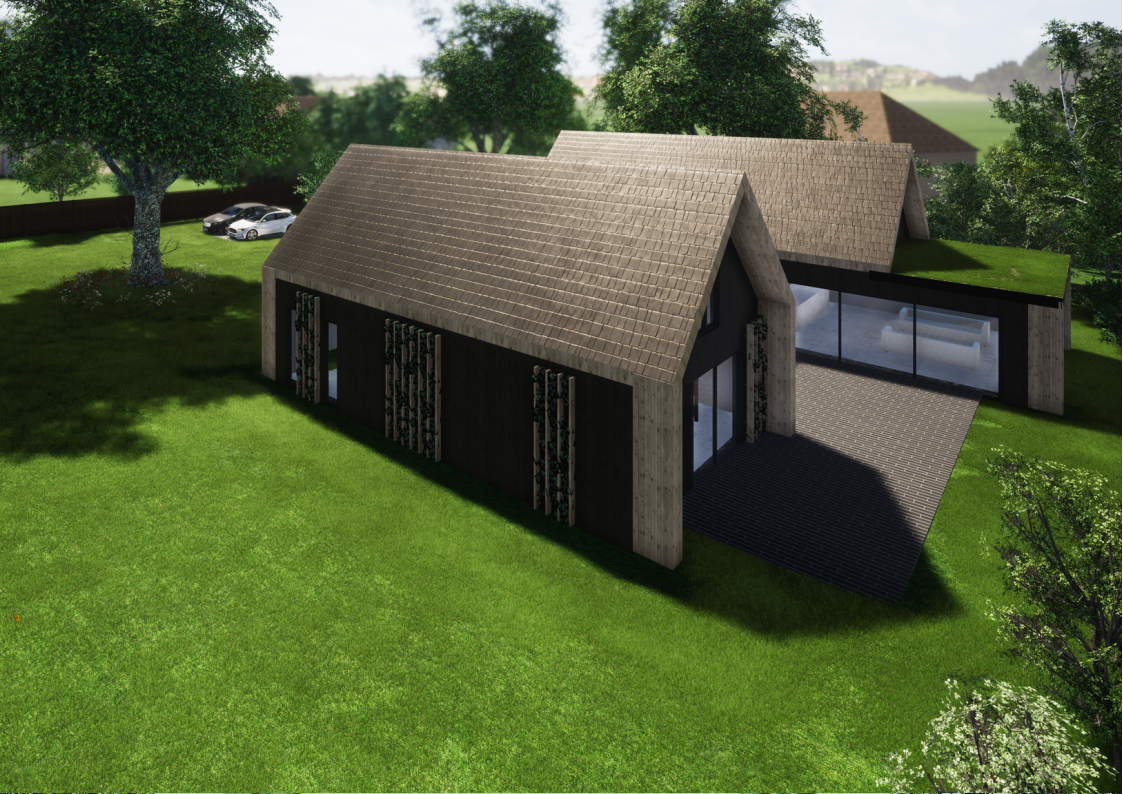
Millen Homes LTD
Croxley Green, Hertfordshire
United Kingdom
+44 1923 943 555
hello@wearemillen.com
www.millenhomes.co.uk

WE ARE MILLEN

M I L L E N • 

True Sustainable Development.







MAP

