

MILLEN • 

SYLVAN HOUSE, THATCHAM

One of our latest schemes is this large single home development in Thatcham. Surrounded by large detached homes on a tree lined road is this modern house which will be available for people looking to build their own home in Berkshire. Please get in touch with our team if this is of interest.

CONTACT US



Millen Homes LTD
Croxley Green, Hertfordshire
United Kingdom
+44 1923 943 555
hello@wearemillen.com
www.millenhomes.co.uk

WE ARE MILLEN

MILLEN • 

True Sustainable Development.



New mature understory planting to screen the proposed dwelling from the street scene

New tree planting planted at min 50mm girths min 3m high to provide instant screening in accordance with the previous inspectors observations.

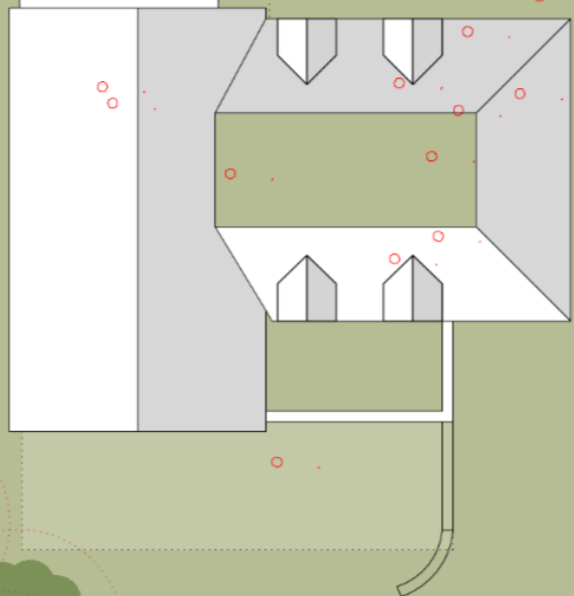
Parking spaces fitted with EV charging points

New boundary line studded with mature tree planting - planted at min 50mm girths min 3m high to provide instant screening in accordance with the previous inspectors observations.

Small shrubs removed

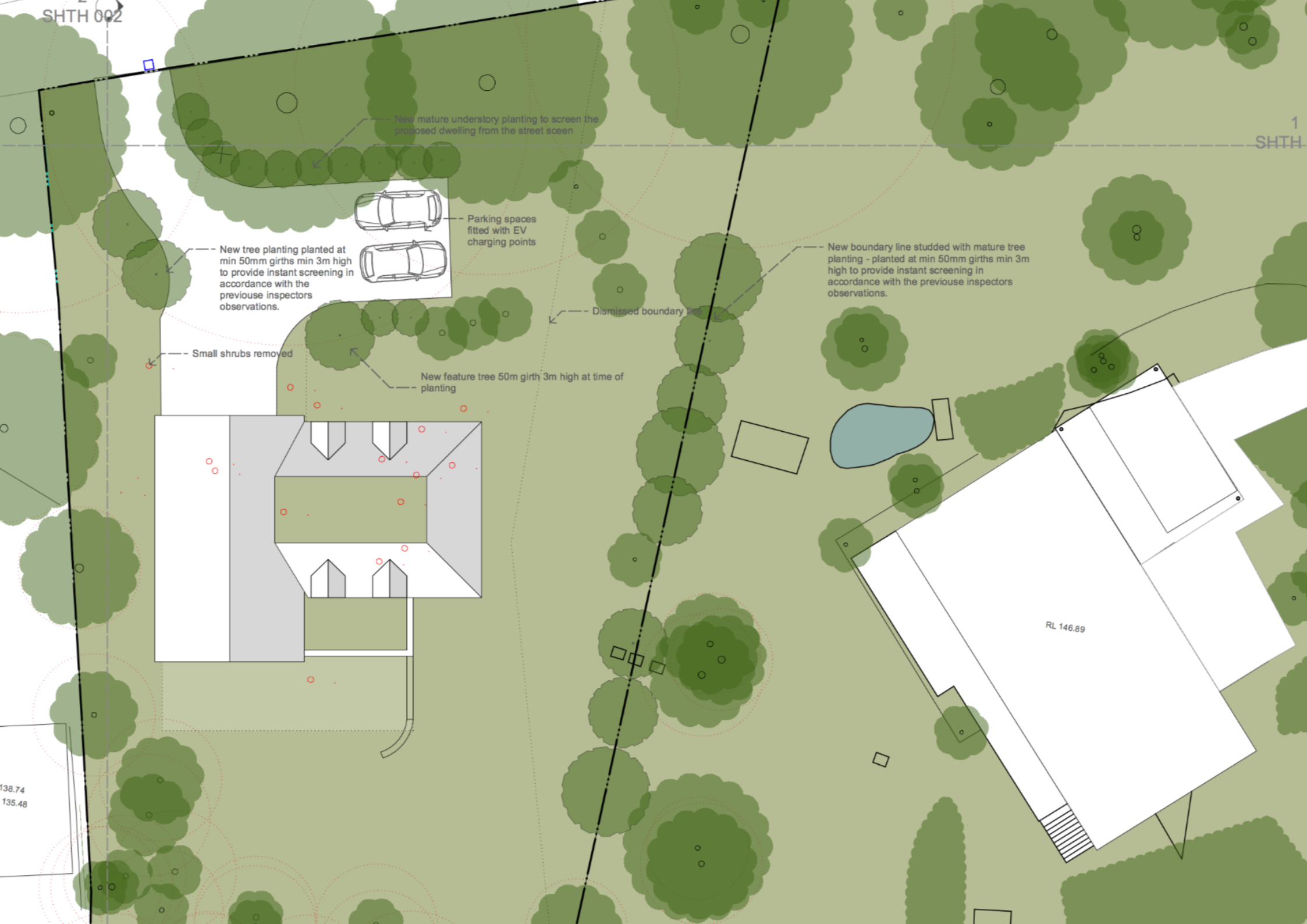
New feature tree 50m girth 3m high at time of planting

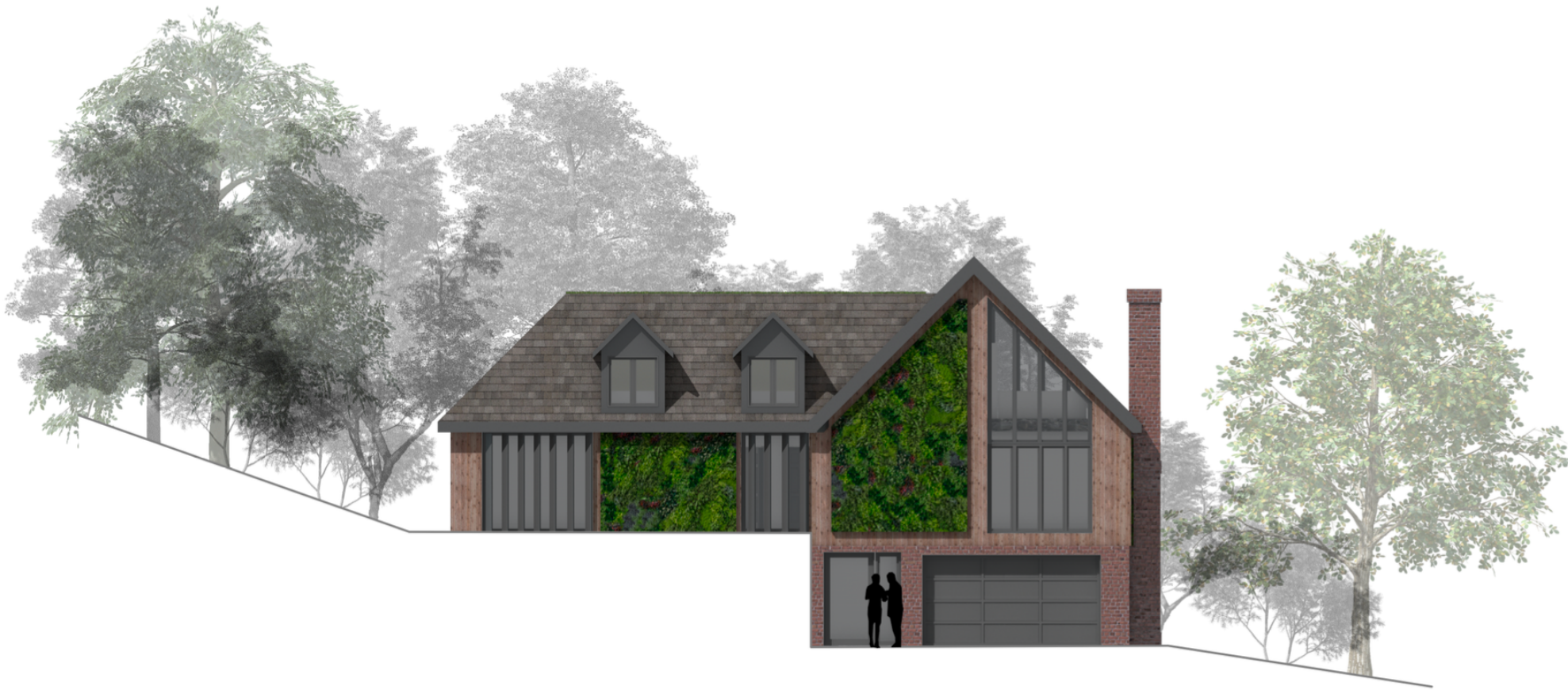
Dismissed boundary line



RL 146.89

138.74
135.48

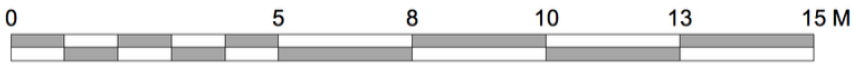




1 INDICATIVE FRONT ELEVATION
Scale: 1:100

PROJECT	PROPOSED DWELLING ON LAND TO THE REAR OF SYLVAN HOUSE, FISHERS LANE, COLD ASH, THATCHAM.	
DRAWING No:	SH EL 001	DATE: 27/01/2022
DRAWING TITLE	FRONT ELEVATION	REVISION No: 1
SCALE:	1:100	

MILLEN • 





MAP

