

MILLEN • 

NEWHOUSE AVENUE, WICKFORD

Located in the town of Wickford, this development of 4 bungalows is designed to be wheelchair adaptable, meaning these properties would meet an identified need within Basildon District for homes for people with disabilities or who are over 55 years old. The site is on a private road close to the Town centre.

Get in touch to register your interest on these properties due for completion in 2024.

CONTACT US



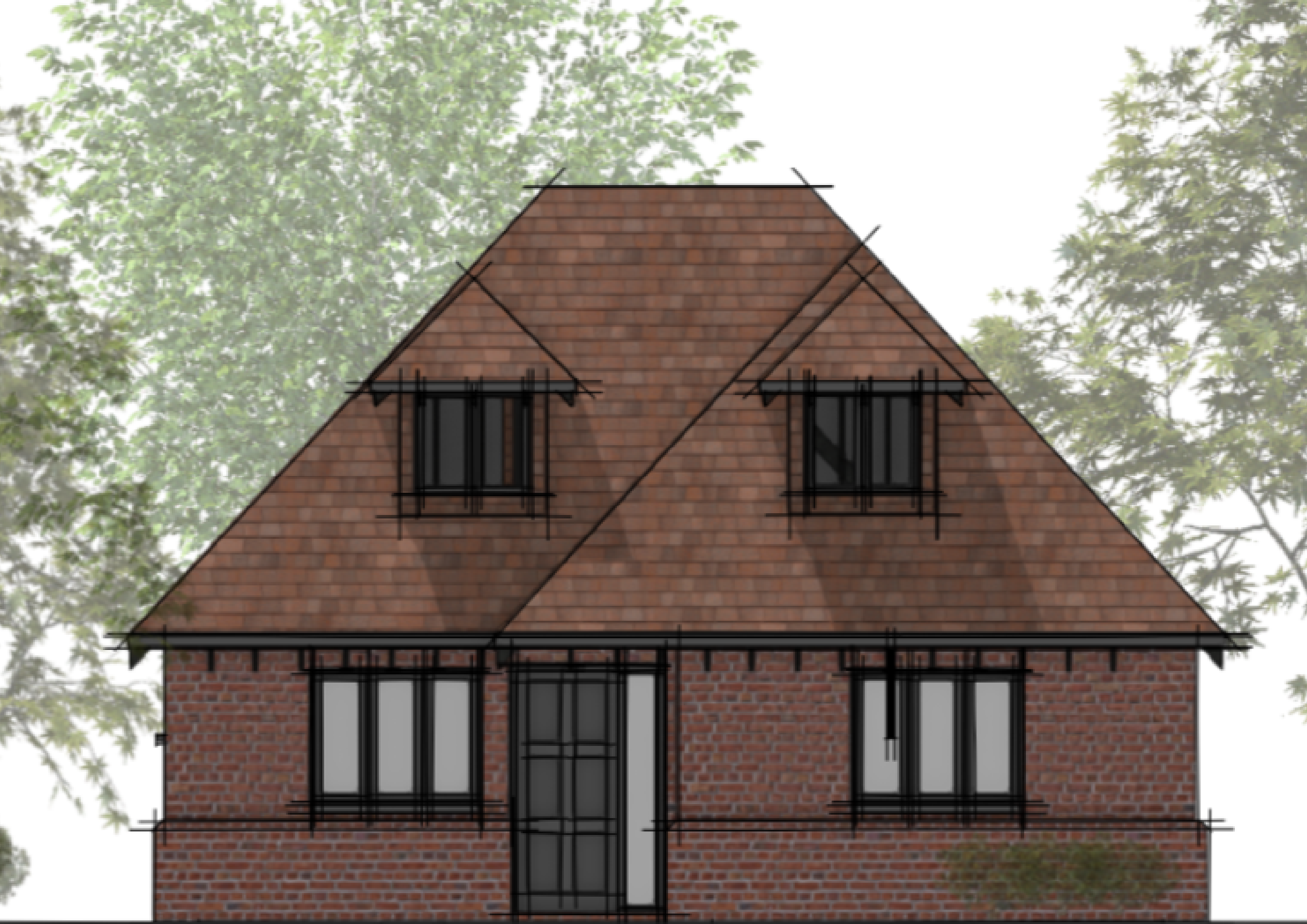
Millen Homes LTD
Croxley Green, Hertfordshire
United Kingdom
+44 1923 943 555
hello@wearemillen.com
www.millenhomes.co.uk

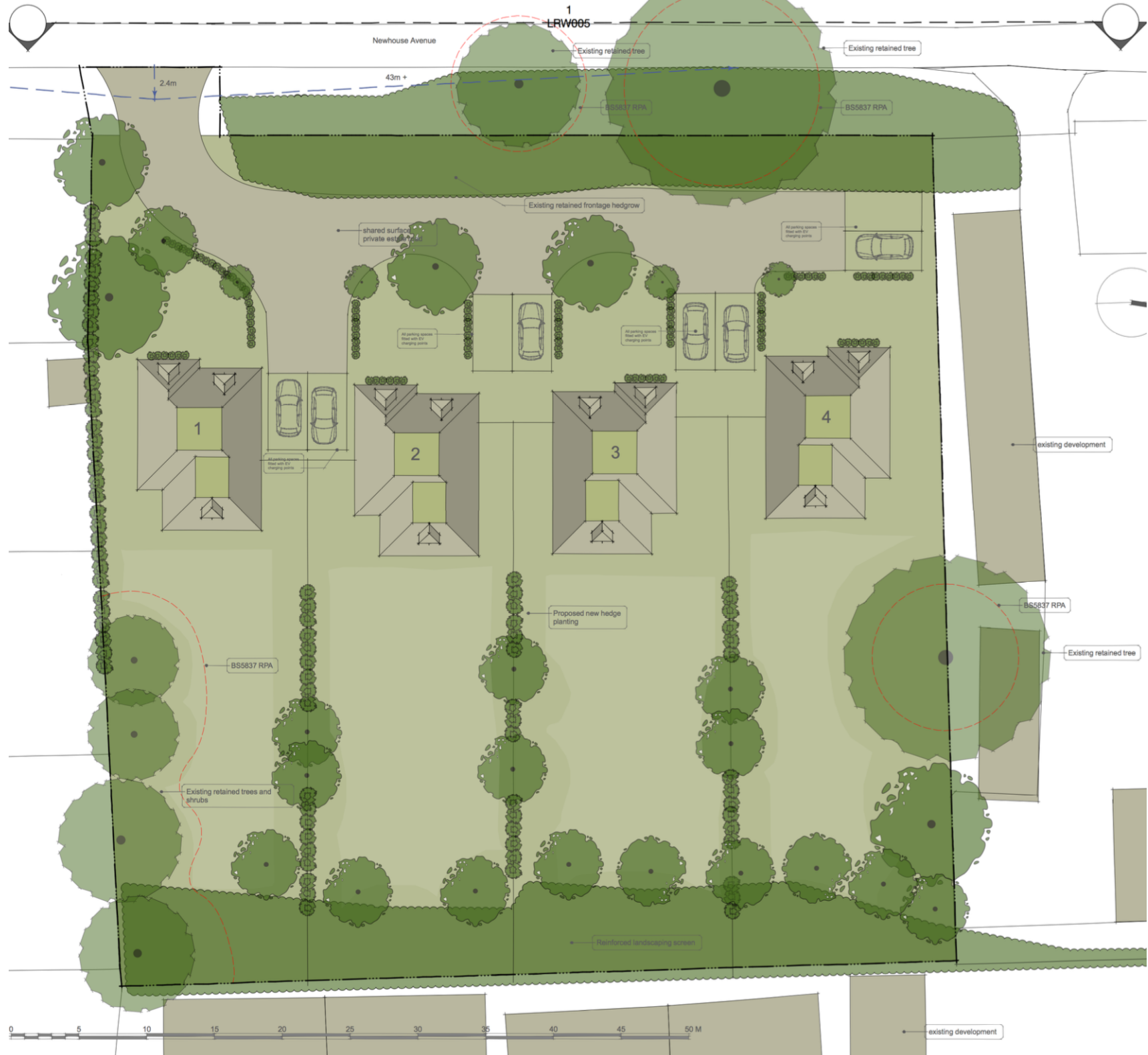
WE ARE MILLEN

MILLEN •

True Sustainable Development.







MAP

